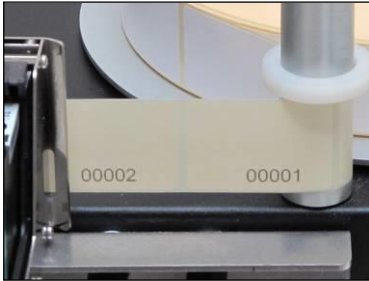


"P-300" Inkjet Label Printer



Reel-to-Reel Inkjet Label Printer.

- *Ideal for overprinting variable data.*
- *Speed up to 235 cm/sec.*
- *Can also print on backing paper.*
- *3- Years Parts and Labour Limited Warranty.*



The Labelmate P-300 Reel-to-Reel Inkjet Label Printer is a combination of the well-known PM-300 Printer Mechanism and the Micron Controller. The system uses the reliable HP TIJ 2.5 technology.

The system is capable of printing a roll of labels of 30cm diameter, in less than 5 minutes with a resolution of 300x150 DPI, this with a negligible cost of the consumable (ink).

Not only, can the P-300 print labels with messages of maximum 12,7mm height, but the P-300 is the ideal machine for adding variable data to pre-printed labels, at low cost and high speed.

The print files are generated on a standard computer using the supplied software and are transferred to the controller via an USB key.

The P-300 uses a standard HP inkjet cartridge. It will print texts, graphics, barcodes, variable counter and dates at speeds up to 150cm/sec. at 300DPI and up to 235cm/sec. at 150DPI. The print height is 12.7mm. The printhead can be placed to print anywhere on a label of up to 100mm by 140mm.

The extremely low-cost of the consumable, makes the machine very economical and ecological. A large variety of ink types, readily available on the market, allow choosing the best cartridge for a specific job.

NEW! The **P-300-U** uses an ultrasonic detector that allows the printer to work on any type of labels, including transparent or dark labels. It detects the difference in thickness between the backing paper and the backing paper plus label.

PRINTHEAD CAPABILITIES:

- Text graphics, barcodes, variable counter and dates.
- Fully UNICODE compatible layout software.
- Counter and dates with digits in roman, arab, farsi or user defined characters.
- Low ink alarm with user-definable level.
- Print height 12,7mm (1/2").
- User-definable resolution: 300x300 DPI, 300x150 DPI, 150x150 DPI, 150x75 DPI and 75x75 DPI. *A special model for 600x300 DPI is available upon request.*
- Separation between design and operation. Nothing in the layout can be destroyed by the operator.
- Spit function to keep fast drying inks open.

With the proper ink and paper, the P-300 can also print on the backing paper.

HARDWARE SPECIFICATIONS:

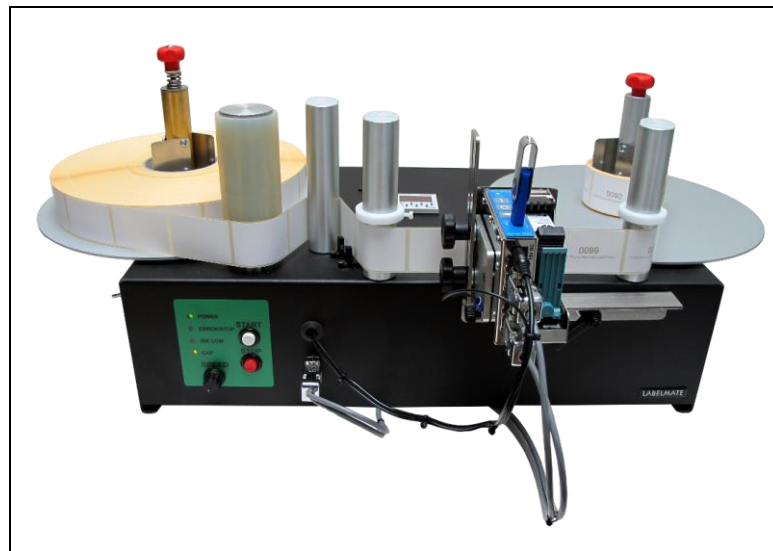
- Maximum roll diameter: 300mm.
- Maximum label width: 125mm.
- Maximum label roll weight: 6Kg.
- Maximum speed:
 - P-300-LS: 150cm/sec. The low-speed is recommended if you are only printing in high resolution.
 - P-300-HS: 235cm/sec.
- Rewind "out" or "in".
- Standard unwind and rewind core holders: 76mm (other sizes optional).
- Power: 220V – 50Hz (110V optional).

Designed for all-day, every-day use, the P-300 Reel-to-Reel Inkjet Label Printer is backed by LABELMATE's famous 3-Year Parts and Labor Limited Warranty, assuring you trouble-free performance.

P/N	MODEL	DESCRIPTION	LABEL WIDTH (mm)	ROLL DIAM. (mm)	SPEED (cm/sec)
LMP001	P-300-LS	Reel-to-Reel Inkjet Label printer low speed model. Recommended for high resolution. Size: W x D x H: 800 x 500 x 330 mm.	125	300	150
LMP002	P-300-HS	Reel-to-Reel Inkjet Label printer high speed model. Recommended for printing in lower resolution. Size: W x D x H: 800 x 500 x 330 mm.	125	300	235
LMP009	P-300-U-LS	Reel-to-Reel Inkjet Label printer low speed model. Recommended for high resolution. For all types of labels. Size: W x D x H: 800 x 500 x 330 mm.	125	300	150
LMP010	P-300-U-HS	Reel-to-Reel Inkjet Label printer high speed model. Recommended for printing in lower resolution. For all types of labels. Size: W x D x H: 800 x 500 x 330 mm.	125	300	235

Shipping Weight: Approx. 20 Kg.

Power: 220/240-vac 50-Hz. 120-vac 60-Hz power supply is also available.



Specifications are subject to change without notice. Data P-300 09/2017

